

REWARD

- Not-for-profit salary packaging
- Additional leave for eligible staff
- Competitive salary rates
- Transparent classification system



GROW & LEARN

- Regular training opportunities for all staff
- Opportunity for career growth
- Commitment to professional development
- Actively supported leadership group
- Regular opportunities for feedback & review
- Workforce and succession planning



PEOPLE & CULTURE

- Collaborative relationships
- Amazing staff room with premium coffee machine
- Inclusive and supportive environment
- Adult workplace based on trust
- Dynamic and progressive workplace (Growth Mindset)
- Internal celebrations - think morning teas and hot chip days
- Opportunities to influence your work environment



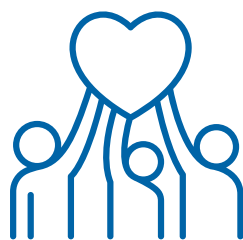
LIFESTYLE & WELLBEING

- Hills location
- Free onsite parking
- Flexible working arrangements
- Employee Assistance Program
- Flu vaccinations offered
- Close to childcare centres
- EV charging stations
- Accessible public transport



COMMUNITY IMPACT

- Sustainability focus
- Prioritise supporting our local community
- Supportive of community social impact initiatives



MANAGEMENT

- Open and regular communication
- Consultative and accessible management team



OUR VISION

Leading integrated health and wellbeing solutions
Reinvesting into the community

OUR VALUES

To do no harm
To continuously improve

WHAT OUR TEAM MEMBERS LIKE ABOUT WORKING FOR SUMMIT HEALTH



"Working with Summit Health provides me with the opportunity to work in, and contribute to, my local health service. This organisation is mostly staffed by local people who are proud of the work we do individually and collaboratively."



"Being close to home, having a clean kitchen, and friendly staff."



"The sustainability measures of an organisation can greatly affect the attractiveness to potential employees. Eg. solar panels, water tanks, opportunity for all staff to recycle and REDcycle their waste."

"A fantastic organisation, looking after employees and the general community."

"The best place I have worked in 14 years of working in South Australia."

"Summit Health Centre has a wonderful caring attitude towards people & genuinely are there to help with clients without judgements."



"Its in a growing community which has the focus of State Government. Its accessible, a great building, good training and support opportunities and flexible working hours and great staff and coffee."

"The opportunity to have a supportive team, good facilities and a friendly workplace."

"Working across such a wide range of not for profit programs as well as different health offerings."

"Salary sacrifice was new to me and I didn't understand the financial benefits this offers on a fortnightly basis. Having the ability to salary sacrifice boosts my fortnightly take home pay."



"Its a small organisation but the communication from senior management is good and not overpowering. There is no micro management which make me feel trusted."

"Even if you hold a lower level position within the organisation, you regularly get the opportunity to voice your concerns, input ideas and help develop the solution/response to challenges."



"The workplace culture is healthy. Realistic goals are set and pressure is not overwhelming."



"It is a well respected organisation in the Adelaide Hills offering high quality services to the community."

"Excellence, positive culture, supportive environment, excellent building."

"The people! Everyone is friendly to everyone regardless of their position or their unit. I appreciate the effort put into ensuring communication to and between staff is as open and transparent as possible."



"The care taken to welcome, support and nurture people is very inspiring. Culture starts from the top. I am pleased to say working here is testament to management putting their money where their mouth is."

